

# CAMBRIDGESHIRE BIRD CLUB Bulletin No. 434



---

*Opinions expressed in this bulletin are not necessarily those of the Club.*

## Welcome to the May / June 2014 Edition

### RECENT BIRD REPORTS

This time we open with two Editors' notes:

#### Breeding records

Some rare and unusual species have bred in the county this year, including the first ever record of Ring-necked Parakeet, the first successful attempt by Mediterranean Gull and a new location for Black-necked Grebe; Stonechat continues its welcome return as a breeding species. Appropriate levels of confidentiality and disclosure have been maintained for all of these so far, with thanks to all concerned. Some of these species can be site faithful or capable of late second broods, and some are highly sensitive to disturbance, so even announcing their location after the breeding season can jeopardise their chances in future years. The best first course of action is to inform the County Recorder if you come across any such species in a likely breeding situation.

#### A reminder about submission dates

Holidays have rather disrupted the timetable for producing this edition, but as we explained last time, more comprehensive bulletin reports can be produced (both for the E-bulletin and printed version) if observers can send in records to the Recorder on a monthly basis, ideally by the 5th of the following month. Thank you to those who already do this

### *May – June Headlines*

**BLACK-THROATED DIVER\*** May: Fen Drayton Lakes (29<sup>th</sup>).

**SQUACCO HERON\*** Jun: Ouse Washes (9<sup>th</sup> – 10<sup>th</sup>).

**CATTLE EGRET\*** May: Ouse Washes RSPB (the bird from April still present until the 7<sup>th</sup>).

**GREAT WHITE EGRET\*** May: Ouse Washes RSPB (2 on 7<sup>th</sup>, single on 17<sup>th</sup>). Jun: Paxton Pits (flyover on 7<sup>th</sup>), Ouse Washes (21<sup>st</sup>, 28<sup>th</sup> – 29<sup>th</sup>), March Farmers (25<sup>th</sup> – 29<sup>th</sup>), Berry Fen (24<sup>th</sup> – 25<sup>th</sup>).

**GLOSSY IBIS\*** Jun: March Farmers (24<sup>th</sup> – 28<sup>th</sup>).

**SPOONBILL** May: Wicken Fen (2 on 4<sup>th</sup>), Nene Washes/March Farmers (24<sup>th</sup> – 28<sup>th</sup>, then 4 on 31<sup>st</sup>).

Jun: Nene Washes/March Farmers (4 on 1<sup>st</sup>, then 1 – 4 all month with a maximum of 6 on 9<sup>th</sup>),

Wicken Fen (3+ flyovers on 2<sup>nd</sup>), Burwell Fen (one on 2<sup>nd</sup>, an immature on 7<sup>th</sup>).

**SPOTTED CRAKE** May: Nene Washes (4<sup>th</sup>), Wicken Fen (15<sup>th</sup> – 18<sup>th</sup>).

Jun: Wicken Fen (several dates), Ouse Washes (10<sup>th</sup>, and as a result of an organised count 3 calling on 22<sup>nd</sup> – 23<sup>rd</sup>).

**CORNCRAKE** May: Nene Washes (4<sup>th</sup>). Jun: Nene Washes (max 10+ on 6<sup>th</sup>).

**HONEY BUZZARD\*** May: Paxton Pits (dark phase bird flew over on 14<sup>th</sup>), Grafham Water (female flyover on 26<sup>th</sup>). Jun: Cambridge/Kendal Way (1<sup>st</sup>), Eaton Socon (possible on 10<sup>th</sup>), Peterborough area (possible on 9<sup>th</sup> – 10<sup>th</sup>).

**WHITE-TAILED EAGLE\*** May: Dry Drayton (flyover on 25<sup>th</sup>).

**SHORT-TOED EAGLE\*** Jun: Swaffham Bulbeck (flyover (11<sup>th</sup>).

**BLACK-WINGED STILT\*** May: Fen Drayton Lakes (1<sup>st</sup> – 11<sup>th</sup>) an escape with an orange ring above the knee on the left leg; this bird moved to Berry Fen on 14<sup>th</sup> and then flitted between Ouse Fen and Berry Fen; it was also reported in June. Paxton Pits (2 in flight on 16<sup>th</sup>), Ouse Fen (3 on 16<sup>th</sup>, one with a ring), Fen Drayton Lakes (2 on 16<sup>th</sup> and 3 on 19<sup>th</sup>, one ringed), Burwell Fen (3 on 17<sup>th</sup>), Offord Cluny (2 on 18<sup>th</sup>). Jun: Burwell Fen (7<sup>th</sup>).

**TEMMINCK'S STINT** May: Paxton Pits (6<sup>th</sup>).

**RED-NECKED PHALAROPE\*** May: Nene Washes/March Farmers (23<sup>rd</sup> and another on 31st). Jun: Nene Washes/March Farmers (male 1<sup>st</sup> – 2<sup>nd</sup>).

**ALPINE SWIFT\*** May: Ouse Fen (10<sup>th</sup>).

**BEE EATER\*** May: Helpston (5 flyovers on 25<sup>th</sup>).

**ROLLER\*** Jun: Warboys (21<sup>st</sup>), an unconfirmed report of one via *birdguides*.

**RED RUMPED SWALLOW\*** May: Cambourne (18<sup>th</sup>).

**SAVI'S WARBLER\*** Jun: Wicken Fen (4<sup>th</sup>).

**GREAT REED WARBLER\*** May: Nene Washes (one singing on 18<sup>th</sup>).



*Black-winged Stilt: photo by James Hanlon*

## Other records

The records in this bulletin are unchecked and may be revised at a later date. Where no numbers are given the records relate to single birds. An asterisk after the name of a species indicates that it is necessary to send a description to the County Recorder before the record will be accepted.

### Wildfowl

**Mute Swan** **May:** Wicken Fen (54 on 19<sup>th</sup>), Ouse Washes (109 at Oxlode on 6<sup>th</sup>). **Jun:** Ouse Washes (190 on 29<sup>th</sup>).

**Whooper Swan** **May:** Nene Washes (3 on 3<sup>rd</sup>), Ouse Washes (2<sup>nd</sup> – 3<sup>rd</sup>).

**Barnacle Goose** **May:** Grafham Water (5 on 19<sup>th</sup>). **Jun:** Grafham Water (1<sup>st</sup>), Paxton Pits (2 on 9<sup>th</sup>).

**Pink-footed Goose** **May:** Wicken Fen (4<sup>th</sup>), Berry Fen (9<sup>th</sup>, and 2 on 12<sup>th</sup>).

**Greylag Goose** **May:** Berry Fen (c190 on 7<sup>th</sup>), Kingfishers Bridge (190 including 21 broods on 15<sup>th</sup>), Sutton N Fen (182 on 31<sup>st</sup>). **Jun:** Godmanchester GP (388 on 13<sup>th</sup>), Fen Drayton Lakes (320 on 27<sup>th</sup>).

**Canada Goose** **May:** Kingfishers Bridge (110 including 92 young on 15<sup>th</sup>), Godmanchester GP (112 on 19<sup>th</sup>). **Jun:** Hinchingsbrooke CP (54 on 17<sup>th</sup>).

**Egyptian Goose** **May:** Earith GP (5 +2 broods on 13<sup>th</sup>), Paxton Pits (2 pairs), Chippenham Fen (21<sup>st</sup>). **Jun:** Paxton Pits (1 – 3 most of the month), Godmanchester GP (10 including 6 young on 25<sup>th</sup>).

**Shelduck** **May:** Ouse Washes (16 on 2<sup>nd</sup>), Paxton Pits (7<sup>th</sup>), Burwell Fen (2 pairs with young on 15<sup>th</sup>), Chippenham Fen (2 plus 7 flyovers on 21<sup>st</sup>), Wicken Fen (max 20 on 19<sup>th</sup>). **Jun:** Nene Washes (11 broods reported on 29<sup>th</sup>), Wicken Fen (family party on 7<sup>th</sup>), Burwell Fen (at least 4 broods and 27 young).

**Ruddy Shelduck** **May:** Fen Drayton Lakes (3<sup>rd</sup>), Berry Fen (2<sup>nd</sup>), Ouse Washes (4<sup>th</sup>), Nene Washes (5<sup>th</sup>).

**Mandarin Duck** **May:** Paxton Pits (26<sup>th</sup>). **Jun:** Sawston (6 on 4<sup>th</sup>)

**Wigeon** **May:** Burwell Fen (2<sup>nd</sup>), Berry Fen (3 pairs on 2<sup>nd</sup>), Ouse Washes (60+ on 3<sup>rd</sup>, a pair on 17<sup>th</sup> and 6 on 24<sup>th</sup>), Paxton Pits (drake on 17<sup>th</sup>), Wicken Fen (19<sup>th</sup>). **Jun:** Wicken Fen (a drake on 11<sup>th</sup>), Paxton Pits (6 on 28<sup>th</sup>), Nene Washes (5 on 29<sup>th</sup>).

**Mallard** **May:** Wicken Fen (74 on 19<sup>th</sup>), Burwell fen (89 on 23<sup>rd</sup>). **Jun:** similar numbers at these sites, and Ouse Washes (100 on 29<sup>th</sup>).

**Teal** **May:** Ouse Washes (3 on 2<sup>nd</sup> and 25+ on 3<sup>rd</sup>, 3 on 17<sup>th</sup> and 24<sup>th</sup>), Paxton Pits (pair on 7<sup>th</sup>, 2 drakes on 31<sup>st</sup>). **Jun:** Nene Washes (31 on 29<sup>th</sup>).

**Gadwall** **May:** Kingfishers Bridge (5 pairs), Wicken Fen (11 pairs, and 36 birds on 19<sup>th</sup>). **Jun:** Kingfishers Bridge (count of 48 with 3 broods), Burwell Fen (39 adults, 3 broods).

**Pintail** **May:** Ouse Washes (2<sup>nd</sup>, and 7 on 3<sup>rd</sup>, a drake on 17<sup>th</sup> and on 24<sup>th</sup>), Cam Washes (a drake on 5<sup>th</sup>).

**Garganey** **May:** reported from Berry Fen (3), Burwell Fen (maximum 4), Cam Washes (2), Fen Drayton Lakes, Little Fen (pair), Nene Washes (2), Ouse Washes (max 4) and Wicken Fen (2). **Jun:** Burwell Fen (2), Nene Washes/March Farmers (7), Ouse Washes (max 26 on 28<sup>th</sup>) and Paxton Pits.

**Shoveler** **May:** Ouse Washes (20 on 7<sup>th</sup>), Burwell Fen (44 on 7<sup>th</sup>). **Jun:** Ouse Washes (246 on 29<sup>th</sup>).

**Red-crested Pochard** **May:** Paxton Pits (1 – 2 drakes during the month then 3 on 26<sup>th</sup> – 31<sup>st</sup>, a pair on 29<sup>th</sup>). **Jun:** Paxton Pits (maximum 3 on several dates).

**Pochard** **May:** Burwell Fen (male on 2<sup>nd</sup> and 13<sup>th</sup>), Paxton Pits (male on 13<sup>th</sup>, 12 on 20<sup>th</sup>, 6 on 24<sup>th</sup> and 12 on 31<sup>st</sup>), Wicken Fen (19<sup>th</sup>), OuseWashes (8 on 24<sup>th</sup>). **Jun:** Grafham Water (drake on 1st), Paxton Pits (maximum 53 on 30<sup>th</sup>), Burwell Fen (27<sup>th</sup>).

**Tufted Duck** **May:** Trumpington (3 pairs, 10<sup>th</sup>), Wicken Fen (34 on 19<sup>th</sup>). **Jun:** Paxton Pits (308 on 30<sup>th</sup>).

**Scaup** **Jun:** Paxton Pits (a drake on 30<sup>th</sup>).

**Goldeneye** **May:** Paxton Pits (female 16<sup>th</sup> – 17<sup>th</sup>).

**Ruddy Duck** **May:** Burwell Fen (female paired with male Pochard, 11th), Kingfishers Bridge (7<sup>th</sup>). **Jun:** Burwell Fen (male on 3<sup>rd</sup>, female on 9<sup>th</sup>).

### Gamebirds

**Grey Partridge** **May:** reported from Burwell Fen (2), Comberton/Westfield Farm (6 on 25<sup>th</sup>), Nene Washes/March Farmers (2), Swaffham Prior Fen (3 pairs), Swaffham Bulbeck and Trumpington (2). **Jun:** reported from Burwell Fen and Haddenham (pair), Comberton (6 on 5<sup>th</sup>), Croxton, and Great Chishill.

**Quail** **May:** Little Shelford (31<sup>st</sup>). **Jun:** Ouse Washes RSPB (1<sup>st</sup>), Witcham (18<sup>th</sup> and 22<sup>nd</sup>), Gt Chishill (2 on 23<sup>rd</sup>).

### Divers, cormorants

**Great Northern Diver\*** **May:** Grafham Water (long-stay bird still present up until the 4<sup>th</sup>).

**Cormorant** **May:** Paxton Pits (42+ on 5<sup>th</sup>). **Jun:** Paxton Pits (50 on 16<sup>th</sup>).

### Egrets and herons

**Bittern** **May:** (maxima in brackets) Nene Washes (3), Ouse Fen (a remarkable 6 of which 5 seen and another heard on 2<sup>nd</sup>; the 5 were in flight apparently being harried by a Marsh Harrier), Ouse Washes, Wicken Fen (2), Woodwalton Fen and 3 other sites. **Jun:** reported from Ouse Fen, Ouse Washes (booming on 24<sup>th</sup>), Nene Washes (5 flights seen on 29<sup>th</sup>), Wicken Fen. *There are encouraging signs that the intensive project work of the RSPB is beginning to have some real effect on this species. For comparison, in 2000 there was only a single summer record in Cambridgeshire of a bird at Wicken Fen.*

**Little Egret** **May:** reported from Burwell Fen (c20 on 19<sup>th</sup>), Grafham Water, Berry Fen (15 on 8<sup>th</sup>), and Wicken Fen (23). **Jun:** Burwell Fen (maximum 40 on 1<sup>st</sup>, 20+ throughout the month), Nene Washes/ March Farmers (from 80 on 7<sup>th</sup>, amazingly up to a peak of 300 on 27<sup>th</sup>; this exceeds the previous highest Cambridgeshire count of 250 in August 2012 on the Ouse Washes), Great Shelford (2 flyovers on 23<sup>rd</sup> and 29<sup>th</sup>), Wicken Fen (3 on 23<sup>rd</sup>), Ouse Washes (25 on 28<sup>th</sup>), Fen Drayton Lakes (5 on 29<sup>th</sup>).

**Grey Heron** **Jun:** March Farmers (71+ on 27<sup>th</sup>).

### Grebes

**Little Grebe** **May:** reported from Burwell Fen (20 on 3<sup>rd</sup>), Trumpington and Wicken Fen (13 on 10<sup>th</sup>). **Jun:** Burwell Fen (23 including 10 young on 22<sup>nd</sup>), Wicken Fen (adult with young, 23<sup>rd</sup>).

**Great Crested Grebe** **May:** reported from St. Ives lock (pair on 12<sup>th</sup>) and Wicken Fen (4 on 19<sup>th</sup>).

**Black necked Grebe** **May / June:** 2 pairs present in the County, one with one young.

### Raptors

**Red Kite** **May:** reported from Foxton, Grafham Water (2), Nene Washes, Paxton Pits (2) and Wicken Fen. **Jun:** reported from Grafham Water and Wicken Fen (several dates).

**Marsh Harrier** **May:** reported from Cam Washes, Chippenham Fen (2), Etton Pit, Flag Fen, Haddenham, Little Wilbraham Fen (3), Nene Washes (3), Ouse Fen (6), Ouse Washes and Wicken Fen (4). **Jun:** reported from Burwell Fen (3), Chippenham Fen, Little Wilbraham Fen, Nene Washes, Ouse Fen, Ouse Washes, Swavesey and Wicken Fen (4). *A Marsh Harrier found in a poor state close to the Ouse Washes in April was taken into care but sadly deteriorated to such an extent that a Vet advised it be put down. It had been ringed as one of a brood of three at Stodmarsh, Kent on June 26<sup>th</sup> 2011.*

**Hen Harrier** **May:** Wicken Fen (7<sup>th</sup>, the latest date for the first winter period).

**Sparrowhawk** **May:** reported from Haddenham/Aldreth Fen and Paxton Pits (3).

**Buzzard** **May:** reported from Babraham, Barton (5), Chippenham Fen, Comberton, Grafham Water (12), Hildersham, Ouse Fen, Paxton Pits (11) and Wicken Fen. **Jun:** Cottenham/Long Drove (2), Great Abington, Little Wilbraham Fen, Pampisford, Paxton Pits (4+), Six Mile Bottom (2) and Wicken Fen (2).

**Osprey** **May:** Floods Ferry (20<sup>th</sup>), Kimbolton (3<sup>rd</sup>). **Jun:** Wansford / Water Newton (24<sup>th</sup> – 25<sup>th</sup>).

## Rails and crane

**Water Rail** **May:** reported from Chippenham Fen, Wicken Fen, Kingfishers Bridge (4 on 31<sup>st</sup>) and 5 other sites. **Jun:** reported from Holme Fen, Ouse Washes (9 on 23<sup>rd</sup>), Wicken Fen and 5 other sites.

**Coot** **May:** Wicken Fen (135 on 17<sup>th</sup>). **Jun:** Berry Fen (163 on 20<sup>th</sup>), Kingfishers Bridge (116 on 28<sup>th</sup> with 11 broods).

**Crane** **May:** Nene Washes (5 on 8<sup>th</sup> and 14<sup>th</sup>, 2 on 18<sup>th</sup>), Burwell Fen (2 on 16<sup>th</sup>). **Jun:** reported from Nene Washes (maximum 2), Ouse Washes (10+ on 9<sup>th</sup>).

## Waders

**Avocet** **May:** Grafham Water (2 on 3<sup>rd</sup> – 4<sup>th</sup>), Nene Washes/March Farmers (10 on 5<sup>th</sup>), Wicken Fen (4 on 23<sup>rd</sup>). **Jun:** Grafham Water (1<sup>st</sup>), Nene Washes/March Farmers (3 on 2<sup>nd</sup>), Isleham Washes (15 on 3<sup>rd</sup>), Burwell Fen (maximum 5 on 7<sup>th</sup>), Wicken Fen (12 on 15<sup>th</sup>), Ouse Washes (21<sup>st</sup>).

**Oystercatcher** **May:** Paxton Pits (bred; 4 on 12<sup>th</sup>, 14 on 26<sup>th</sup>), Burwell Fen (2 on 15<sup>th</sup>), Wicken Fen (2 on 19<sup>th</sup>). Godmanchester GP (5 with 2 pairs on 19<sup>th</sup>). **Jun:** Wicken Fen (3 on 4<sup>th</sup>), Cottenham/Long Drove (2 on 26<sup>th</sup>), Paxton Pits (maximum 8), Kingfishers Bridge (4 including pair with young, 6<sup>th</sup>).

**Golden Plover** **May:** Flag Fen (4<sup>th</sup>).

**Grey Plover** **May:** Nene Washes/March Farmers (2 on 4<sup>th</sup>, the first of the year, single on 5<sup>th</sup>, 1 – 2 on 19<sup>th</sup> to 22<sup>nd</sup>), Burwell Fen (7<sup>th</sup>), Paxton Pits (20<sup>th</sup>).

**Lapwing** **May:** Kingfisher Bridge (7 broods on 15<sup>th</sup>). **Jun:** Paxton Pits (c25 on 11<sup>th</sup>, then c70 on 27<sup>th</sup>), Burwell Fen (76 on 22<sup>nd</sup>).

**Little Ringed Plover** **May:** Burwell Fen (2<sup>nd</sup>), Fen Drayton Lakes (a single on 9<sup>th</sup> and 3 on 11<sup>th</sup>), Trumpington (2 on 10<sup>th</sup> and one on 18<sup>th</sup>), Paxton Pits (1 – 2 from 7<sup>th</sup> to 28<sup>th</sup>). **Jun:** Fen Drayton Lakes (bred), Paxton Pits (maximum 2), Burwell Fen (27<sup>th</sup> – 29<sup>th</sup>).

**Ringed Plover** **May:** Nene Washes/March Farmers (7 on 5<sup>th</sup>, 11 on 6<sup>th</sup>, 76 on 11<sup>th</sup>, up to 46 on 19<sup>th</sup> – 22<sup>nd</sup>, still 13 on 28<sup>th</sup>), Wicken Fen (8 on 15<sup>th</sup>), Paxton Pits (2 – 7 from 6<sup>th</sup> to the end of the month), Trumpington (20 on 10<sup>th</sup>), Berry Fen (7 on 10<sup>th</sup> and a single on 12<sup>th</sup>), Nene Washes/Eldernell (35 on 19<sup>th</sup>). **Jun:** Nene Washes/March Farmers (30 on 1<sup>st</sup>, 15 on 7<sup>th</sup>), Paxton Pits (maximum 3).

**Whimbrel** **May:** Burwell Fen (flyover on 2<sup>nd</sup>, one on 4<sup>th</sup>, 15<sup>th</sup> and 23<sup>rd</sup>), Paxton Pits (one on 7<sup>th</sup>, then 1 – 2 on 20<sup>th</sup> to 29<sup>th</sup>), Ouse Washes (2 on 11<sup>th</sup>), Nene Washes (11<sup>th</sup>), Farcet Fen (flyover on 27<sup>th</sup>).

**Curlew** **May:** Paxton Pits (7<sup>th</sup>), Ouse Washes (24<sup>th</sup>). **Jun:** Paxton Pits (1<sup>st</sup>), March Farmers (2 on 15<sup>th</sup> and a single on 29<sup>th</sup>), Wicken Fen (17<sup>th</sup>).

**Black tailed Godwit** **May:** Ouse Washes (single on 3<sup>rd</sup>, 4 on 24<sup>th</sup>), Nene Washes/Eldernell (c70 on 5<sup>th</sup> and c50 on 11<sup>th</sup>, of the race *islandica*), Paxton Pits (5 on 6<sup>th</sup>), Berry Fen (5 on 7<sup>th</sup>) March Farmers (35 on 8<sup>th</sup>). **Jun:** March Farmers (52 on 26<sup>th</sup> and 82 on 29<sup>th</sup>), Burwell Fen (12 on 29<sup>th</sup>), Paxton Pits (4 on 30<sup>th</sup>).

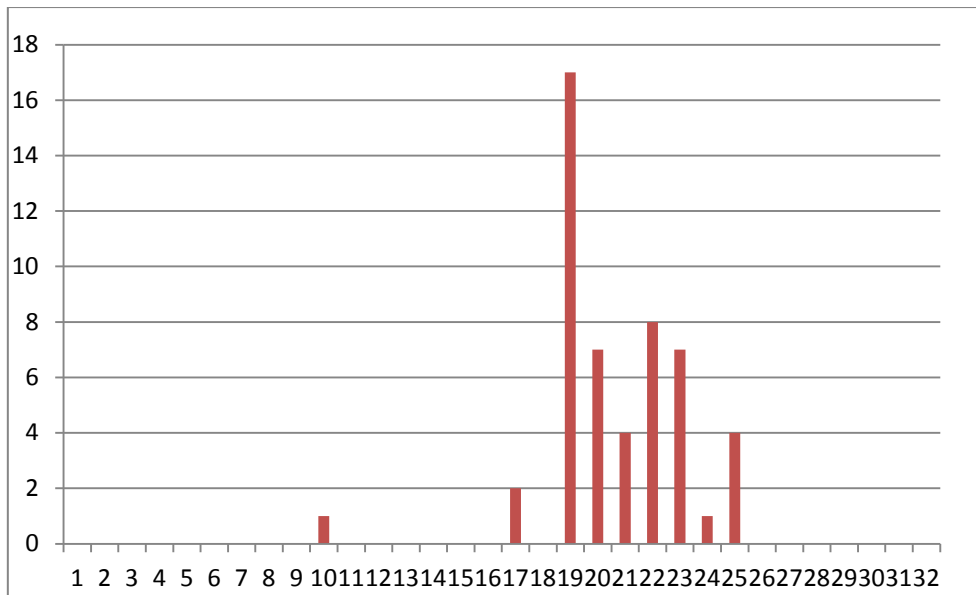
**Bar-tailed Godwit** **May:** Burwell Fen (1<sup>st</sup> – 3<sup>rd</sup>), Ouse Washes (3 on 3<sup>rd</sup>), Nene Washes (4<sup>th</sup> and 23<sup>rd</sup> flyover), Paxton Pits (single on 6<sup>th</sup> and 3 on 7<sup>th</sup>), Grafham Water (7<sup>th</sup> – 11<sup>th</sup>).

**Turnstone** **May:** Burwell Fen (7<sup>th</sup>), Paxton Pits (one on 7<sup>th</sup>, 2 on 10<sup>th</sup>), Nene Washes/Eldernell (2 on 19<sup>th</sup>), March Farmers (2 on 23<sup>rd</sup>).

**Knot** **May:** Paxton Pits (22<sup>nd</sup> – 23<sup>rd</sup>, then 2 on 24<sup>th</sup> – 25<sup>th</sup>).

**Ruff** **May:** Nene Washes/March Farmers (22<sup>nd</sup>). **Jun:** March Farmers (a single on 24<sup>th</sup> and 6 on 29<sup>th</sup>), Burwell Fen (27<sup>th</sup>), Ouse Washes (5 on 28<sup>th</sup>).

**Sanderling** **May:** Paxton Pits (10<sup>th</sup>, the first of the year, 2 on 17<sup>th</sup>, 7 on 20<sup>th</sup>, 2 on 21<sup>st</sup>, 4 on 22<sup>nd</sup>, one on 23<sup>rd</sup> – 24<sup>th</sup>), Grafham Water (7 on 19<sup>th</sup> and 4 on 25<sup>th</sup>), Nene Washes/March Farmers (8 on 19<sup>th</sup> and 2 on 21<sup>st</sup>, 4 on 22<sup>nd</sup>, 3 on 23<sup>rd</sup>), Burwell Fen (2 on 19<sup>th</sup>). **Jun:** Nene Washes/March Farmers (3 on 1<sup>st</sup>).



Sanderling passage

Whereas Bar-tailed Godwit and Whimbrel both had a prolonged passage (April 20<sup>th</sup> – May 23<sup>rd</sup> and April 14<sup>th</sup> – May 29<sup>th</sup> respectively), Sanderling had a short and concentrated one (shown above).

**Dunlin May:** Burwell Fen (4 on 2<sup>nd</sup> and 7<sup>th</sup>), Nene Washes (2 on 6<sup>th</sup>, 106 on 11<sup>th</sup>, 2 on 19<sup>th</sup>), Grafham Water (18 on 7<sup>th</sup>, 5 on 8<sup>th</sup> and 4 on 9<sup>th</sup>), Fen Drayton Lakes (9<sup>th</sup>), Berry Fen (3 on 7<sup>th</sup>, 6 on 9<sup>th</sup>, 8 on 12<sup>th</sup> and 3 on 14<sup>th</sup>), Nene Washes (1 – 2 from 19<sup>th</sup>, 16 on 22<sup>nd</sup>). Paxton Pits (2 on 6<sup>th</sup> rising to 26 on 9<sup>th</sup>, then back to 1 on 14<sup>th</sup>, 7 on 24<sup>th</sup>). **Jun:** reported from Nene Washes, Burwell Fen and Paxton Pits.

**Little Stint May:** Nene Washes/March Farmers (19<sup>th</sup>).

**Common Sandpiper May:** Fen Drayton Lakes (2<sup>nd</sup> and 7<sup>th</sup> – 11<sup>th</sup>), Grafham Water (4<sup>th</sup> and 8<sup>th</sup>), Paxton Pits (6<sup>th</sup> – 24<sup>th</sup>), Nene Washes (11<sup>th</sup>), Trumpington (18<sup>th</sup>), Cam Washes (19<sup>th</sup>).

**Green Sandpiper May:** Burwell Fen (1<sup>st</sup>), Fen Drayton Lakes (3 on 6<sup>th</sup>). **Jun:** Paxton Pits (12<sup>th</sup>), March Farmers (15<sup>th</sup>, 24<sup>th</sup> to 29<sup>th</sup>), Cottenham/Long Drove (3 on 26<sup>th</sup>), Fen Drayton Lakes (29<sup>th</sup>).

**Spotted Redshank May:** Nene Washes/March Farmers (3<sup>rd</sup> – 4<sup>th</sup>), Little Fen/Berry Fen (2 on 7<sup>th</sup> – 10<sup>th</sup>). **Jun:** March Farmers (24<sup>th</sup> – 28<sup>th</sup>, then 2 on 29<sup>th</sup>).

**Greenshank May:** Burwell Fen (singles on 2<sup>nd</sup>, 4<sup>th</sup> and 3 on 19<sup>th</sup>), Nene Washes (4 on 4<sup>th</sup> and a single on 11<sup>th</sup>), Berry Fen (10<sup>th</sup> and 21<sup>st</sup>), Paxton Pits (21<sup>st</sup>), Ouse Washes RSPB (2 on 24<sup>th</sup>). **Jun:** Burwell Fen (2<sup>nd</sup>), March Farmers (22<sup>nd</sup> – 29<sup>th</sup>, 2 on 27<sup>th</sup>), Ouse Washes (28<sup>th</sup>).

**Wood Sandpiper May:** Wicken Fen (5<sup>th</sup>), Nene Washes/March Farmers (21<sup>st</sup> – 22<sup>nd</sup>).

**Redshank May:** Paxton Pits (maximum 4 on 11<sup>th</sup>), Burwell Fen (3 on 15<sup>th</sup>), Wicken Fen (7), Kingfishers Bridge (3 pairs, 1<sup>st</sup>). **Jun:** reported from Ouse Washes (21 on 21<sup>st</sup>), Wicken Fen (bred) and 3 other sites.

**Woodcock May:** Chippenham Fen (2), Wicken Fen (maximum 5), Woodwalton Fen (3<sup>rd</sup>). **Jun:** reported from Holme Fen (23 passes on 24<sup>th</sup>) and Wicken Fen (3).

**Snipe May:** drumming birds reported from Wicken Fen, Nene Washes, Kingfishers Bridge. **Jun:** Nene Washes (30+ on 6<sup>th</sup>).

Terns and gulls

**Little Tern May:** Burwell Fen (19<sup>th</sup>).

**Black Tern May:** singles at Grafham and Ouse Washes from 3<sup>rd</sup> to 26<sup>th</sup>, Paxton Pits (4 on 20<sup>th</sup>). **Jun:** max 2 at Graham Water, and 4 briefly at Ouse Fen (18<sup>th</sup>).

**Sandwich Tern May:** Paxton Pits (19<sup>th</sup>), Grafham Water (2 on 19<sup>th</sup>).

**Common Tern** **May:** Paxton Pits (c20 on 7<sup>th</sup>), Grafham Water (14 on 11<sup>th</sup>), Trumpington (4 pairs nesting on rafts). **Jun:** Paxton Pits (bred).

**Arctic Tern** **May:** Grafham Water (460 on 1<sup>st</sup> for a short time, 16 on 2<sup>nd</sup>, 2 on 4<sup>th</sup>, 4 on 9<sup>th</sup> and 2 on 11<sup>th</sup>), Ferry Meadows CP (1<sup>st</sup>), Burwell Fen (2 on 2<sup>nd</sup>, single on 3<sup>rd</sup>), Ouse Washes (2 on 2<sup>nd</sup>), Fen Drayton Lakes (3 on 2<sup>nd</sup>), Roswell Pits (15 on 2<sup>nd</sup>), Berry Fen (2 on 2<sup>nd</sup>), Paxton Pits (3 on 2<sup>nd</sup>).

**Black-headed Gull** **May:** Trumpington (3 pairs nesting on rafts), Burwell Fen (c 90 nests, maximum 384 on 17<sup>th</sup>). **Jun:** Milton Tip (200+ on 26<sup>th</sup>), Cottenham/Long Drove (150 on 26<sup>th</sup>).

**Little Gull** **May:** Ouse Washes (7<sup>th</sup>), Paxton Pits (29<sup>th</sup>).

**Mediterranean Gull** **May:** Sutton Gault (adult on 17<sup>th</sup>). **Jun:** Burwell Fen (1<sup>st</sup> summer on 14<sup>th</sup>), Dunkirk (*a confirmed breeding record, the first successful attempt for the county. The young were colour ringed – see the website photo gallery*).

**Common Gull** **May:** Ouse Washes (2<sup>nd</sup>), Paxton Pits (13<sup>th</sup>). **Jun:** Kings Dyke NR 20 nests (1<sup>st</sup>), Milton Tip (26<sup>th</sup>), Nene Washes (29<sup>th</sup>); *a less reported species especially in summer*.

**Lesser Black-backed Gull** **May:** up to 10 reported from several sites. **Jun:** Godmanchester GP (c20 breeding pairs, 25<sup>th</sup>), Milton Tip (550+ on 26<sup>th</sup>), Cottenham/Long Drove (150 on 26<sup>th</sup>).

**Herring Gull** **Jun:** Milton Tip (14 on 26<sup>th</sup>), Tanholt GP (200 on 28<sup>th</sup>).

**Yellow-legged Gull** **Jun:** Paxton Pits (adult on 12<sup>th</sup>, single on 25<sup>th</sup>, 4 on 27<sup>th</sup> and 5 on 30<sup>th</sup>), Milton Tip (17 on 26<sup>th</sup>), Grafham Water (4 on 29<sup>th</sup>), Nene Washes (29<sup>th</sup>).

**Caspian Gull** **Jun:** Milton Tip (26<sup>th</sup>).

**Great Black-backed Gull** **Jun:** Milton Tip (26<sup>th</sup>), Grafham (36 on 29<sup>th</sup>).



*Common Tern at Fen Drayton Lakes: photo by Colin Brown*

#### Doves, cuckoo, owls and kingfisher

**Stock Dove** **May:** Manea (80 on 24<sup>th</sup>), Comberton/Westfield Farm (5 on 25<sup>th</sup>). **Jun:** Tubney Fen (4 pairs), Landbeach (4 pairs).

**Turtle Dove** **May:** Paxton Pits (1 – 2 from 3<sup>rd</sup>), Colne GP (13<sup>th</sup>), Haddenham (14<sup>th</sup>), Cottenham (14<sup>th</sup>), Maxey Pits (14<sup>th</sup>), also at Lode, Ouse Fen, Sutton Gault, Sutton Meadowlands (6).

**Jun:** reported from Aldreth, Balsham, Cambridge, Cambridge Research Park, Cottenham/Long Drove (2), Fen Drayton Lakes (3), Grafham Water (2), Great Abington, Haddenham, Impington, Kingfishers Bridge, Little Wilbraham Fen (3), Maxey Pits, Needingworth Pits (3), Paxton Pits (bred), Ramsey (several) and Reach.

**Cuckoo May:** reported from Aldreth, Burwell Fen (3), Cam Washes, Chippenham Fen (3), Flag Fen (2), Gamlingay Wood (3), Haddenham (2), Little Wilbraham Fen, Ouse Washes, Paxton Pits (2), Nene Washes (3), Soham, Sugely Wood, Wicken Fen (max 4 males and 3 females) and Woodwalton Fen (2). **Jun:** reported from Chippenham Fen (max 3 males, one ringed on 10<sup>th</sup>), Ditton Park Wood, Ely BF, Fulbourn Fen NR, Kingfisher's Bridge, Little Wilbraham Fen (max 2 males and a female), Paxton Pits (max 3) and Wicken Fen (max 8 males and 7 females).

**Barn Owl May:** reported from Aldreth, Burwell Fen, Haddenham and Wicken Fen (2). **Jun:** Fowlmere NR (bred), Nene Washes, Ouse Washes, Paxton Pits, Wicken Fen (6) and Witcham (bred).

**Little Owl May:** reported from Burwell Fen, Reach, Wicken Fen and Maxey. **Jun:** reported from Nene Washes, Castor Hanglands, Upton, Farcet, Fulbourn, Wicken Fen and Witcham (bred).

**Tawny Owl May:** reported from 8 sites including Woodwalton Fen and Fen Drayton Lakes (bred at both sites), Chesterton Cambridge, Wicken Fen and Chippenham Fen. **Jun:** reported breeding at Perry, Buckden, Brampton Wood, Wicken Fen, and Castor Hanglands; still calling at Cambridge site.

**Long-eared Owl May & June:** breeding reported from a number of locations across the county.

**Swift May:** Burwell Fen (15+ on 2<sup>nd</sup>); main arrival seems to have been from 8<sup>th</sup>, for example at Grafham Water (100 on 8<sup>th</sup>, 400+ on 9<sup>th</sup> and 700+ on 11<sup>th</sup>) and Fen Drayton Lakes (200 on 11<sup>th</sup>).

**Kingfisher May:** reported from Berry Fen (3), Chippenham Fen (a juvenile was ringed on the 21<sup>st</sup>), Haddenham, Ouse Washes, Paxton Pits (2) and Wicken Fen. **Jun:** reported from Fen Drayton Lakes, Kingfishers Bridge, Ouse Washes (2) and Paxton Pits.

#### Falcons and Parrots, Corvids

**Hobby May:** reported from Abington/Granta Park (one dead on 7<sup>th</sup>), Berry Fen, Burwell Fen, Cambourne, Cam Washes, Fen Drayton Lakes, Haddenham, Little Wilbraham Fen (2), Nene Washes/March Farmers, Eldernell (2), Ouse Fen (4), Ouse Washes, Paxton Pits (3), Waterbeach, Wicken Fen (9) and Woodwalton Fen (3). **Jun:** Burwell Fen (2), Fen Drayton Lakes, Fulbourn Fen NR (2), Holme Fen, Impington, Six Mile Bottom, Kingfishers Bridge, Nene Washes, Paxton Pits (2) and Wicken Fen (4).

**Peregrine May:** reported from Flag Fen, Nene Washes/March Farmers, Ouse Washes, Paxton Pits, Wicken Fen and Cambridge. **Jun:** at Burwell Fen, Hemingford Grey and 4 other sites.

**Ring-necked Parakeet\* Jun:** Ouse Washes (1 – 2 several dates), Soham (10<sup>th</sup>), Milton (flyover on 14<sup>th</sup>), Cottenham (15<sup>th</sup>). *The Ouse Washes pair was the first county breeding record for this species.*

**Raven May:** Four sightings of singles at scattered sites.

#### Crests, tits and larks

**Coal Tit May:** reported from 6 sites **Jun:** reported from 7 different sites, so under-reported overall?

**Bearded Tit May:** reported from Kingfishers Bridge (5 pairs on 15<sup>th</sup>), Wicken Fen (bred), and 2 other sites. **Jun:** reported from Little Wilbraham Fen, Ouse Fen and Wicken Fen.

**Skylark May:** Comberton (19 on 14<sup>th</sup>), Holme Fen (34 on 16<sup>th</sup>). **Jun:** Darlow's farm (37 on 24<sup>th</sup>).

#### Hirundines and warblers

**House Martin May:** Grafham Water (150+ on 11<sup>th</sup>), Paxton Pits (c40 on 11<sup>th</sup>). **Jun:** Fen Drayton Lakes (110 on 29<sup>th</sup>).

**Cetti's Warbler May:** Cambridge Research Park, Nene Washes (4), Ouse Washes, Paxton Pits (3), Wicken Fen (11) and Woodwalton Fen (2). **Jun:** Kingfishers Bridge, Little Wilbraham Fen, Maxey Pits, Paxton Pits and Wicken Fen (6).

**Garden Warbler May:** Castor Hanglands (25 singing on 5<sup>th</sup>).



**Whitethroat May:** farmland counts at Barton CRT (13 on 5<sup>th</sup>) and Comberton/Westfield Farm (18 on 14<sup>th</sup>); also Fen Drayton Lakes (20 on 2<sup>nd</sup>).

**Grasshopper Warbler May:** reported from Castor Hanglands (2), Little Wilbraham Fen, Nene Washes, Paxton Pits, Wicken Fen (7) and Woodwalton Fen. **Jun:** reported from Wicken Fen (maximum 10).

#### Nuthatch, Spotted Flycatcher and Nightingale

**Nuthatch May:** reported from 4 sites. **Jun:** reported from 6 sites.

**Spotted Flycatcher May:** reported from Lode (14<sup>th</sup>), Woodwalton Fen (2 on 14<sup>th</sup>, the first of the year), Hardwick Wood (pair on 15<sup>th</sup>), Haddenham (pair on 15<sup>th</sup>) and Hayley Wood (3 on 26<sup>th</sup>). **Jun:** breeding reported from Buckden Marina, Haddenham, Perry, Soham and Wisbech Cemetery.

**Nightingale May:** reported from Castor Hanglands (24 singing on 5<sup>th</sup>), Fen Drayton Lakes (2), Paxton Pits (2), Wicken Fen and Woodwalton Fen. **Jun:** reported from Castor Hanglands (c 6 territories), and Paxton Pits (4 singing).

#### Starts and chats

**Redstart May:** Wicken Fen (8<sup>th</sup>), Castor Mill (7<sup>th</sup>).

**Whinchat May:** Paxton Pits (3<sup>rd</sup> and 8<sup>th</sup>), Little Wilbraham Fen (7<sup>th</sup>), Grafham Water (7<sup>th</sup>), Paxton Pits (male on 12<sup>th</sup>), Knapwell RSPB (14<sup>th</sup>).

**Stonechat May:** Burwell Fen (23<sup>rd</sup>). **Jun:** Burwell Fen (several dates). Wicken Fen (a bird seen feeding fledged young). *This is a rare breeding bird in Cambridgeshire so all sightings in summer are valuable. The most recent breeding records have come from Wicken Fen and Cambourne.*

**Wheatear May:** Ferry Meadows CP (1<sup>st</sup>), Flag Fen (4<sup>th</sup>), Nene Washes (single on 4<sup>th</sup>, 4 at March Farmers on 5<sup>th</sup> and a single on 13<sup>th</sup>, then 3 on 14<sup>th</sup>), Little Wilbraham Fen (2 on 7<sup>th</sup>), Tubney Fen (7<sup>th</sup>), Paxton Pits (7<sup>th</sup>), Whittlesey (2 on 10<sup>th</sup>), Wicken Fen (12<sup>th</sup>), Knapwell RSPB (14<sup>th</sup>).

#### Sparrows, wagtails and pipits

**Tree Sparrow May:** Farcet Fen (bred). **Jun:** Chatteris (15 on 6<sup>th</sup>).

**Yellow Wagtail May:** Nene Washes / March Farmers, (30 on 3<sup>rd</sup>), Doddington (20 on 3<sup>rd</sup>). **Jun:** 2 to 8 territories held in Yelling, Croxton, Eltisbury, Gt Chishill, Hinxtion, Foxton, Brampton, Burwell Fen.

**Grey Wagtail May:** reported from Cambridge (3 pairs along the Cam) and Grafham Water.

**Pied Wagtail May:** White Wagtail (*alba*) Grafham Water (25<sup>th</sup>).

**Tree Pipit May:** Knapwell RSPB (flyover on 14<sup>th</sup>).

**Rock Pipit May:** Paxton Pits (12<sup>th</sup>).

#### Finches

**Linnet May:** Comberton/Westfield Farm (17 on 14<sup>th</sup>).

**Crossbill Jun:** Cambridge/Lovell Road (flyover on 8<sup>th</sup>).

**Yellowhammer Jun:** well represented in Gt Chishill, Comberton, Yelling and at Nine Wells (12, 11, 8, and 9 territories respectively), but relatively few observers reported this species.

#### Exotica

**Baikal Teal May:** Ouse Washes (a drake on 1<sup>st</sup>; *this bird is under consideration by BBRC as a true vagrant*).

**Ross's Goose May:** Wicken Fen (several dates). **Jun:** Fen Drayton Lakes (29<sup>th</sup>).

**Contributors:** Colin Addington, Richard Allison, Jake Allsop, Dave Anderson, David Avis, Louise Bacon, Andy Bayes, Guy Belcher, Peter Bircham, Jenny Brightwell, Chris Brown, Philip Bubb, Will Burdett, Ian Burfield, Ellie Burke, Mike Burdekin, Malcolm Busby, James Cadbury, Dave Chambers, Saimon Clark, Mike Clydesdale, Ade Cooper, Ali Cooper, Steve Cooper, Pauline and Vic Cousins, Mark Curley, Trevor Dant, Carole Davis, Martin Davis, Tim Dee, Nikki Dibb, Brendan Doe, Steve Dudley, Mark Eaton, David Ebbutt, James Fowler, Martin Fowlie, Steve Gann, Neil Gates, Ed Gill, Simon Gillings, Derek Guar Dennis Hall,, James Hanlon, Andy Hannaford, Vicki Harley, Mark Hawkes, David Heath, Jonathan Heath, Stephen Heather, Peter Herkenrath, Mark Hill, Michael Holdsworth, Ken Hook, David Hopkins, Colin Hothersall, Neil Howard, Sarah Howlett, Bob Humphrey, Tim and Carol Inskipp, Phil Jackman, Sue Jarrett, Richard

Johnson, Charlie Kitchen, Mike Knowles John Le Gassick,, Vince Lea, Jono Leadley, Tony Lowe, Steve Lowe, Tony Mallyon, Bob Mansfield, Monica and Owen Marks, Bruce Martin, Paul Mason, Steve May, Matt Mellor, Donal McCarthy, Andy Merryweather, Martin O'Leary, Richard Palmer, John Parslow, Rob Partridge, Gavin Paterson, Richard Patient, John Pavey, Garth Peacock, Mark Peck, Rob Pople, Duncan Poyser, Paul Pulham, Graeme Reed, Gareth Rees, Tony Roberts, John Saunders, Norman Sills, Bob Smith, Claire Spottiswoode, Jonathan Taylor, Paul Taylor, Kevin Taylor, Richard Thomas, Chris Thorne and the Wicken Fen Group Andrew Tongue, Hugh Venables, John Walsh, Mark Ward, Iain Webb, Mike Weedon, David Wege, Steve West, Tony Weston, Jamie Wells, John and Sue Wells, Peter Wells, Steve West, Tony Weston, John Whiteman, Martin Wightman, Kevin Wilson, Matt Wilson, Hugh Wright, Julian Young and Christophe Zockler.

## **CBC Woodland Bird Conference, Saturday 27<sup>th</sup> September**

This edition is accompanied by a flier and booking sheet for the club's conference on Saturday 27<sup>th</sup> September at Cottenham Village College, organised in collaboration with the BTO and RSPB. Please make sure of your place by booking as soon as possible. A fascinating day is in prospect, focusing on the habitats, species and conservation of woodland birds. Vince Lea previews the day:

"The Woodland Bird Conference promises to be another great event if previous CBC conferences are anything to go by. I spend quite a lot of time bird watching in woodland, not a habitat that attracts many 'birders' looking for rarities but a rich environment that can be really satisfying. Very occasionally a scarce migrant or wanderer turns up, but the real interest for me lies in the day-to-day activities of the resident species and regular migrants. Sadly, the experience is getting less rich as species disappear from the mix. My regular patch, Hardwick Wood, used to hold Willow Tit, Tree Sparrow and Nightingale in days before I knew it; during my time there has been just a single visit from Lesser-spotted Woodpecker. Some species have held on well, notably Marsh Tit, and a few have even increased, including Tawny Owl, Spotted Flycatcher and Chiffchaff but I am pretty sure it is not as good as it could be, and as I help to manage it, I look forward to finding out what makes a good wood!"

*Vince Lea*

## **Cambridgeshire Bird Atlas 2007-2011 - last chance!**

We are down to our last few copies for sale, so now is the time to get your copy of this wonderful publication, if you don't already have one.

The atlas can be purchased from Amazon:

<http://www.amazon.co.uk/gp/product/0902038273>

or from the NHBS:

[http://www.nhbs.com/bkfn0\\_207682.html](http://www.nhbs.com/bkfn0_207682.html)

or please send a cheque, made payable to the *Cambridgeshire Bird Club*, for £17.00 (£15.00 + £2.00 p&p, UK only) to: Cambridgeshire Bird Club, 4(a) Cavendish Avenue, CAMBRIDGE CB1 7US

## **Cambridgeshire Bird Club Winter Garden Bird Survey.**

If you have a garden in this area and you like to watch the birds in your garden, we would like to invite you to take part in the first Cambridgeshire Bird Club Winter Garden Bird Survey, 2014-2015. We ask that you note the bird species feeding or foraging in your garden from 5<sup>th</sup> October 2014 to 7<sup>th</sup> March 2015.

Each week, please mark off the species on the list available from the Cambridgeshire Bird Club website: [www.cambridgebirdclub.org.uk](http://www.cambridgebirdclub.org.uk) . At the end of April, send it in to: [gardenbirds@cambridgebirdclub.org.uk](mailto:gardenbirds@cambridgebirdclub.org.uk)

Next summer you will be able to discover which species of birds make most use of gardens in the county during the winter months, find out whether new species are coming into gardens and whether the old regular species are making less use of the facilities.

## Methodology

The survey will commence on Sunday 5<sup>th</sup> October 2014 and run until Saturday 7<sup>th</sup> March 2015.

The survey recording week will run from each Sunday to the following Saturday.

The survey is for those people whose gardens are in the area recorded by the bird club (the administrative areas of Cambridgeshire County and Peterborough Unitary Authority).

Mark off with an X on the survey form the bird species feeding or foraging in your garden for each week given – the numbers of each species are not needed, just that you have seen it feeding or foraging.

The form is available as a download from the Cambridgeshire Bird Club website either as a pdf for you to print and keep by the window, or an Excel spreadsheet to save and fill in.

Species not listed may come to use the Cambridgeshire and Peterborough gardens during the time surveyed. Please do add into the open boxes any other bird species that use your garden for feeding or foraging.

Please only mark species actively using your garden. The birds must come into your garden and to be feeding or searching for food. A species just flying over your garden does not count. However, sights such as a hovering Kestrel looking into your garden for food do count.

At the end of the final week, (after Saturday 7<sup>th</sup> March 2015, and by 30<sup>th</sup> April 2015, please return your results to: (by email) [gardenbirds@cambridgebirdclub.org.uk](mailto:gardenbirds@cambridgebirdclub.org.uk) or by post to: 15 School Lane, Toft Cambridge, CB23 2RE.

When it comes to analysing the results it would help to know two facts about your garden. Firstly is your garden rural or urban, and secondly do you regularly provide food for the birds or not? Please could you mark these on the form.

Should you require any further information please refer to the Frequently Asked Questions page on the website or email myself, Rebecca Buisson at: [Cambsgardenbirds@gmail.com](mailto:Cambsgardenbirds@gmail.com).

We hope that you enjoy surveying your garden and will continue to send in your results for future years to come. Thank you for taking part.

*Rebecca Buisson*

## **Forthcoming meetings**

### **Friday 12th September, Cottenham Village College**

#### **Facing Extinction: the World's Rarest Birds and the Race to Save Them by Paul Donald**

Dr Paul Donald is Principal Conservation Scientist in the RSPB's international research team and is the Editor-in-Chief of the international ornithological journal *Ibis*. Among his many research interests is the conservation ecology of critically endangered species, and he is the lead author of a recent book on the subject. In this talk he will discuss the causes of rarity in birds and will outline the measures that are being used to prevent their extinction.

### **Friday 10th October, Cottenham Village College**

#### **Northumberland through the Seasons by Martin Kitching**

Wintering wildfowl and waders, including Pale-bellied Brent Geese from Svalbard, Bar-tailed Godwit, Purple Sandpiper and Long-tailed Duck in iconic landscapes; Black Grouse, Golden Plover, Ring Ouzel and other moorland specialities in the spring; internationally important seabird colonies, including Arctic, Sandwich, Common, Little and Roseate Terns during the summer and the magic of the North Sea's shearwater, skuas, whales and dolphins and some prime east coast migration in the autumn; with everything from vast forests to wide open moorland to rolling sand dunes and hidden precipitous valleys Northumberland is the perfect destination for the birdwatcher who just wants to get away from it all. Martin Kitching is the Senior Guide and photography tutor at Northern Experience Wildlife Tours. Martin has over 40 years of birdwatching experience, and 17 years of organising offshore pelagic trips in the North Sea and is also the North East Regional Officer for the marine conservation charity MARINELife.

## Prizes for the Raffle

The Club is in need of a new stock of raffle prizes for evening meetings and for the raffle at the forthcoming conference. If you have suitable items, particularly books on bird watching, natural history, or the countryside, walking, gardening etc. please bring them to an evening meeting at Cottenham Village College, or St John's Hall, Cambridge, where Diana Leech will be pleased to receive them. Diana may be able to collect larger quantities of books, in which case please contact her at [d.leech11@btinternet.com](mailto:d.leech11@btinternet.com)

## New Members

We welcome the following new members – Edward King of Longstanton, and Anthony Rhodes of Wigston Leicester.

### Club Contacts

**Chair:** Vince Lea Tel: 01223 263962 [chairman@cambridgebirdclub.org.uk](mailto:chairman@cambridgebirdclub.org.uk)

**Secretary:** Michael Holdsworth Tel: 01223 476643 [secretary@cambridgebirdclub.org.uk](mailto:secretary@cambridgebirdclub.org.uk)

**Treasurer:** Roger Swain [treasurer@cambridgebirdclub.org.uk](mailto:treasurer@cambridgebirdclub.org.uk)

**Annual Report Editor:** Vince Lea (acting) [chairman@cambridgebirdclub.org.uk](mailto:chairman@cambridgebirdclub.org.uk)

**County Recorder:** Louise Bacon Tel: 01223 263962 [recorder@cambridgebirdclub.org.uk](mailto:recorder@cambridgebirdclub.org.uk)

**Meetings Secretary:** Vicki Harley Tel: 01954 250340 [vicki.harley@care4free.net](mailto:vicki.harley@care4free.net)

**Research Officer:** Andrew Tongue [andrew.tongue@googlemail.com](mailto:andrew.tongue@googlemail.com)

**Bulletin Editors:** Peter Bircham (e-Bulletin) Chris Brown (paper editions)

[cdbcbulletin@cambridgebirdclub.org.uk](mailto:cdbcbulletin@cambridgebirdclub.org.uk)

**Membership Secretary:** Bruce Martin Tel : 01223 700656 [bruce.s.martin@btinternet.com](mailto:bruce.s.martin@btinternet.com)

**Website:** Chris Quay [webmaster@cambridgebirdclub.org.uk](mailto:webmaster@cambridgebirdclub.org.uk)

**Other Council Members:** Ali Cooper, Mike Foley

**The Cambridgeshire Bird Club** exists to promote the conservation of birds and their habitats in the county, identify areas of conservation value, and advance the education of the public in the study of birds. [www.cambridgebirdclub.org.uk](http://www.cambridgebirdclub.org.uk)

The editors would welcome contributions to the E-Bulletin and print edition, on topics such as identification problems, behaviour, summaries of club talks, and book reviews. Contact us at [cdbcbulletin@cambridgebirdclub.org.uk](mailto:cdbcbulletin@cambridgebirdclub.org.uk), and use this address to let us know if you would like to receive your bulletin in e-mail format rather than paper.

### Bird Records, sightings and news

If you have seen a scarce or local bird, please submit the news to the '[What's about](#)' page on the Club website via [Pete and Paul](#) who maintain an up-to-date selection of recent highlights. You can also report interesting sightings on the [Cambirds](#) email group (not run by the Club, but we access the records). Any major rarities can be phoned in to Birdline East Anglia on 07941 333970.

Full lists of your records should continue to be submitted monthly to **Louise Bacon** the County Recorder, preferably using the [spreadsheet](#) available on the Records section of the website, **by the 5<sup>th</sup> of the following month.**

# GOOD BIRDING!